

REMAP-CAP

Randomized, Embedded,
Multifactorial Adaptive Platform
trial for Community-Acquired
Pneumonia



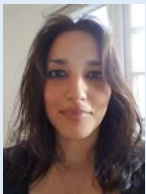
October 2017

NEWSLETTER

Prof. Dr. Anthony Gordon
(UK Network Lead)
&
Prof. Dr. Kathy Rowan
(UK Network Lead)



Dr. Farah Al-Beidh
(Project Manager)
&
Mr. Paul Mouncey
(Project Manager)



Prof. Dr. Frank Brunkhorst
(German Network Lead)
&
Ms. Isabella Schiller
(Project Manager)



Ready to go!

Within the coming weeks, three more Dutch sites will start including patients in REMAP-CAP. Thereafter it is expected that sites in Belgium, Ireland, Portugal, Hungary and the United Kingdom will join before the end of 2017. We expect include a significant number of patients this winter season!

Two networks help coordinate the European region

The team for the European part of REMAP-CAP, under the PREPARE FP7 grant, will consist of three networks who will support the individual sites during the study start-up and conduct of the trial. Our 'UK network' and 'German Network' will cover all country specific issues within their country. They are overseen by the Regional Coordinating Center, the University of Utrecht, that will have a coordinating role for all other European Countries and will be the sponsor for the whole of Europe.

The United Kingdom Network

This network is a collaboration between Imperial College and the Intensive Care National Audit & Research Centre (ICNARC). The network will be involved in site selection, project management and will assist sites in study start-up. The network is led by Anthony Gordon from Imperial and Kathy Rowan from ICNARC. Paul Mouncey from ICNARC and Farah Al-Beidh from Imperial are managing the project across the UK network.

The German Network

The Jena University Hospital will be the coordinating center in Germany lead by professor Frank Brunkhorst. Frank and his team will assist with site selection, project management and study start-up. As a start, during the SEPSIS conference in Weimar the REMAP-CAP protocol was presented by professor Marc Bonten to introduce the study to German intensivists. Isabella Schiller will be the –interim– project manager for the German Network.

Are you interested to join?

If you would like to join the REMAP-CAP Study, please send an email to the general REMAP-CAP email address (below). The members of the Regional Coordinating Committee will provide you with essential information and guide you through the process of becoming a member of the REMAP-CAP family.

<https://www.prepare-europe.eu/About-us/Workpackages/Workpackage-5>

prepare_icu@umcutrecht.nl